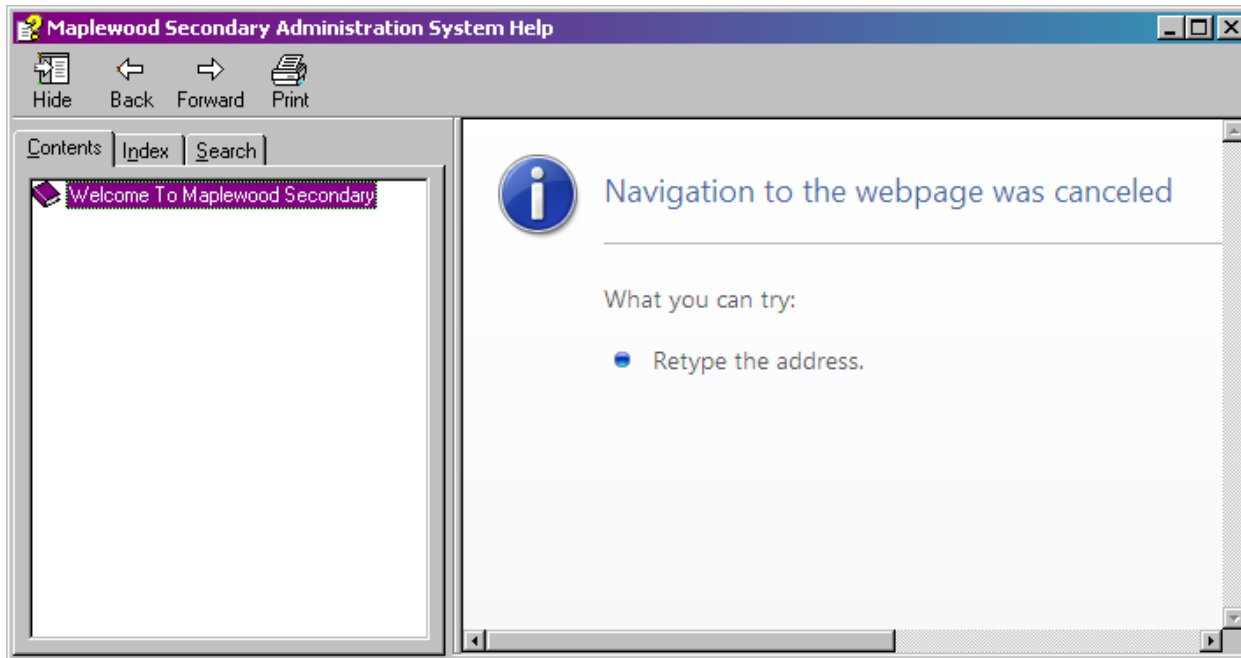


How to Access Maplewood Help on a Network Share

Upon installing Maplewood on a network server, if the Maplewood Program location is defined as a UNC path (rather than a mapped drive letter), users will encounter a message "Navigation to the webpage was canceled" when trying to access Help through the Help menu or the F1 key.



The reason this message appears is that Microsoft implemented a restriction to prevent malicious code from being distributed through HTML help files. To remedy this situation, two keys must be added to the registry.

This solution applies to all operating systems Windows 2000 and up.

If being run on a Terminal Server, this process needs to be done by an administrator on the Windows 2003 server, either from the consoles or through a terminal services session. If you have more than 1 Terminal Server it must be done on each server, substituting the appropriate server and share names as required.

1. Using your favorite text editor create a file called AccessHelp.reg. Enter the following text into the file:

```
Windows Registry Editor Version 5.00

[HKEY_LOCAL_MACHINE\SOFTWARE\Microsoft\HTMLHelp\1.1\ItssRestrictions]
"UrlAllowList"="\MapleTS\NS_Prgs\WPr\;file://MapleTS\Prgs\WPr"
"MaxAllowedZone"=dword:00000001
```

(NOTE: remember to leave the second line blank)

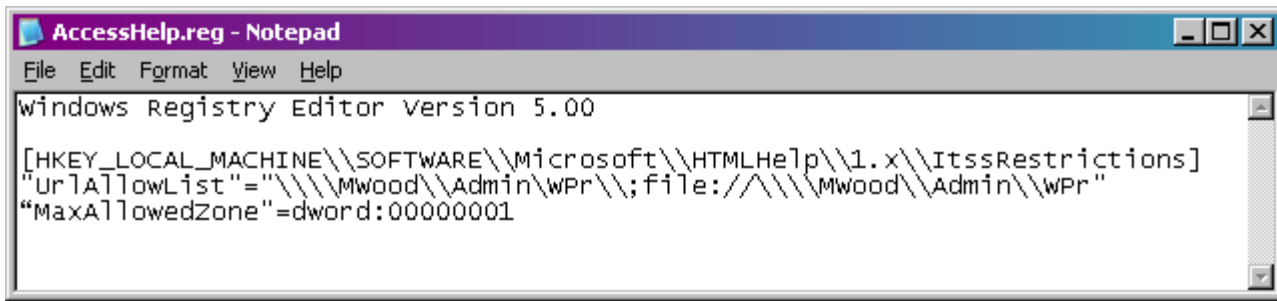
2. Make the appropriate changes to the "URLAllowList" string:
 - Substitute the name of your server for *MapleTS*
 - Substitute the name of your share for *Prgs* and add in any additional required folders. Make sure to type two backslashes for every one that you would normally use.
 - Leave the application directory at *WPr*

For example, if your server is called *MWood* with a share called *Admin*, the UrlAllowList would look like this:

```
"UrlAllowList"="\MWood\Admin\WPr\;file://MWood\Admin\WPr"
```

The MaxAllowedZone setting is the same for all systems.

When finished, your file should look like this:



```
AccessHelp.reg - Notepad
File Edit Format View Help
Windows Registry Editor Version 5.00

[HKEY_LOCAL_MACHINE\\SOFTWARE\\Microsoft\\HTMLHelp\\1.0\\ItssRestrictions]
"UrlAllowList"="\\\\Mwood\\Admin\\wPr\\;file:/^/\\\\Mwood\\Admin\\wPr"
"MaxAllowedZone"=dword:00000001
```

3. When you are done creating the file, save it to a safe location, and close the file.
4. Double click on the "AccessHelp.reg" file. This will create the registry key in your registry.
5. This registry file must be run on each workstation that will be accessing Maplewood.

You do not need to reboot the server or have the users log off. They do need to exit from Maplewood and go back in, in order to see the Help file properly.

For more information please see Microsoft Knowledgebase Article 902225
<http://support.microsoft.com/kb/902225>.