

# Configuring Printing for use with Maplewood Hosting Service

## Installing the Software

There are two ways to install the printer drivers:

### 1) Installation Package

To download the installation package, navigate to <https://www.maplewood.com/TSAccess/> and click on the link called "Download Install File for Remote Printing". This will allow you to download an MSI package that can be saved to a location your local computer or network and can then be used to install the printing software manually or automatically to multiple computers in your building.

If your Windows network uses Active Directory, you can utilize the built-in function to distribute this installation package to any necessary workstations.

### 2) Automated Installation (Active-X Deployment Package)

This software can be automatically installed on your computer by going to <https://www.maplewood.com/TSAccess/>. From there, select either the "Main Terminal Server" or "Install Print Driver" links. Full instructions on this subject can be found by clicking on the "How To Connect Via Terminal Services" link on <https://www.maplewood.com>

## Configuring the Software

Now that the software is installed, there will be an application named *ScrewDrivers Client v4* in the Control Panel. By double-clicking on it, a screen similar to the images below will appear.

### Points of importance:

1. Only 2 printers will be brought over to the server from the local workstation (see figure 1B).
2. The default printer on the remote desktop can be different from that of the local workstation.
3. If the user has not 'spoofed' the default printer (see figure 1A below), the remote session mimics that of the local workstation. This means that when the default printer on the local workstation changes, so does the default printer on the remote session.

Figure 1A

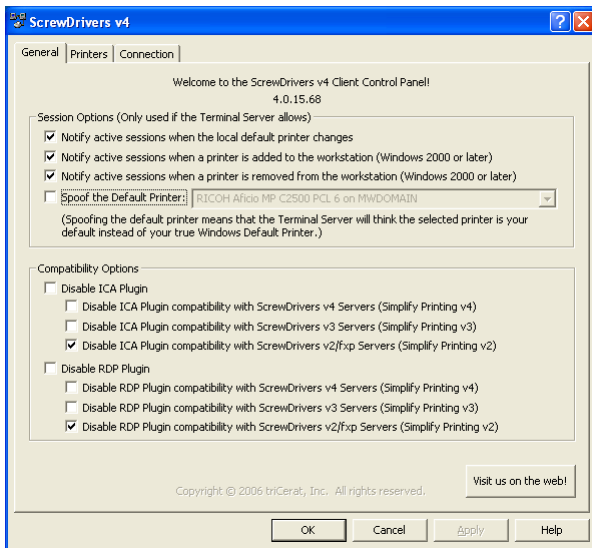
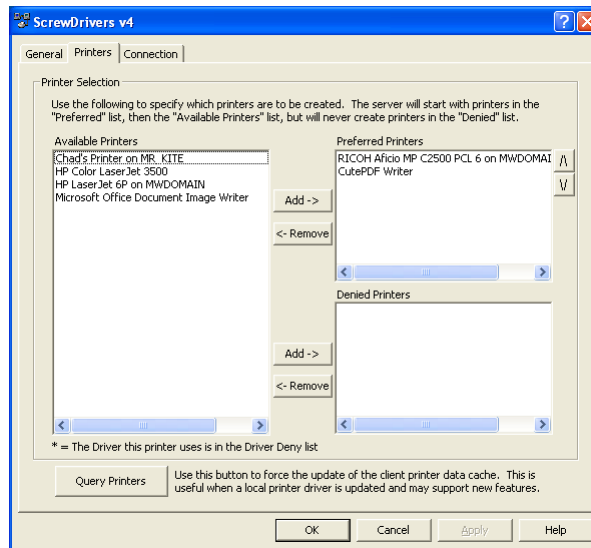


Figure 1B



For most users, the default options selected in figure 1A should be sufficient. Only use the 'Spoof the Default Printer' option when a user wants a different default printer for their remote desktop, than that of their local workstation. To do this, check the 'Spoof the Default Printer' box, and then select the desired default printer from the drop down list.

If the workstation has more than two printers installed, the user can specify which two printers will come to the remote session (shown in figure 1A). If no printers are specified, the software will automatically bring over the default printer plus one additional available printer. There are no guarantees as to which printer will be brought over to the remote session unless it is specified. Choose up to two printers from the 'Available Printers' list and add them to the 'Preferred Printers' list. If more than two printers are selected under 'Preferred Printers' the remote session will only bring over the first two.

If you have chosen two printers, and neither of them is set as a default (local workstation or 'spoofed'), only the first printer on the 'Preferred Printers' list will appear.