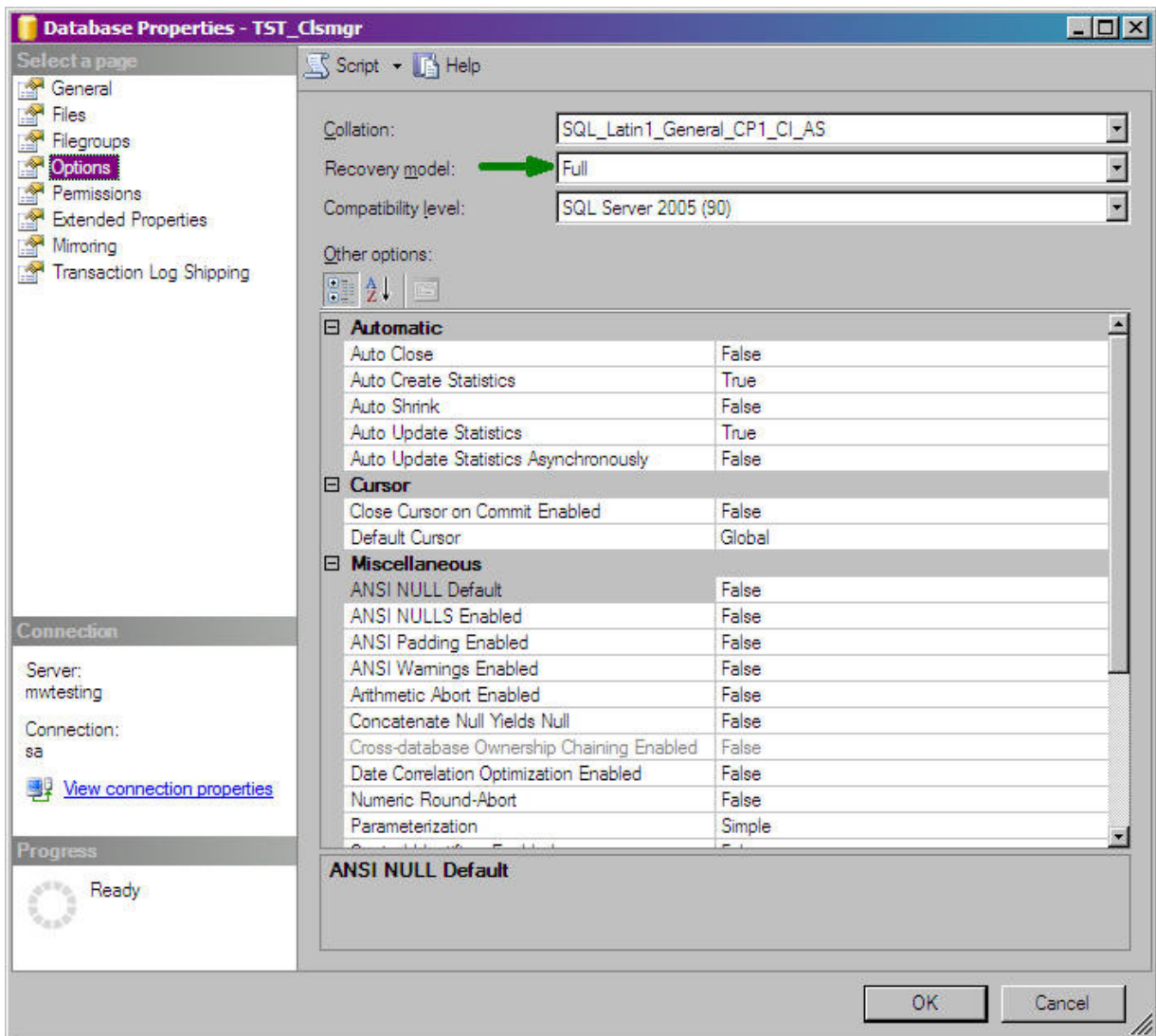


Setting the Recovery Model to Full

Please set all SQL Classroom Manager databases to have a Recovery Model of Full. This causes a transaction to be created for each and every change that is made to the Classroom Manager database, thus enabling the Maplewood support department to better investigate issues.

In SQL Server 2005, open the Properties of the database. In the Properties window, select Options and change the Recovery Model from Simple to Full.



Once this has been done, please refer to the Technical Article entitled "Setting up a Backup of Transaction Logs and Shrinking Job".