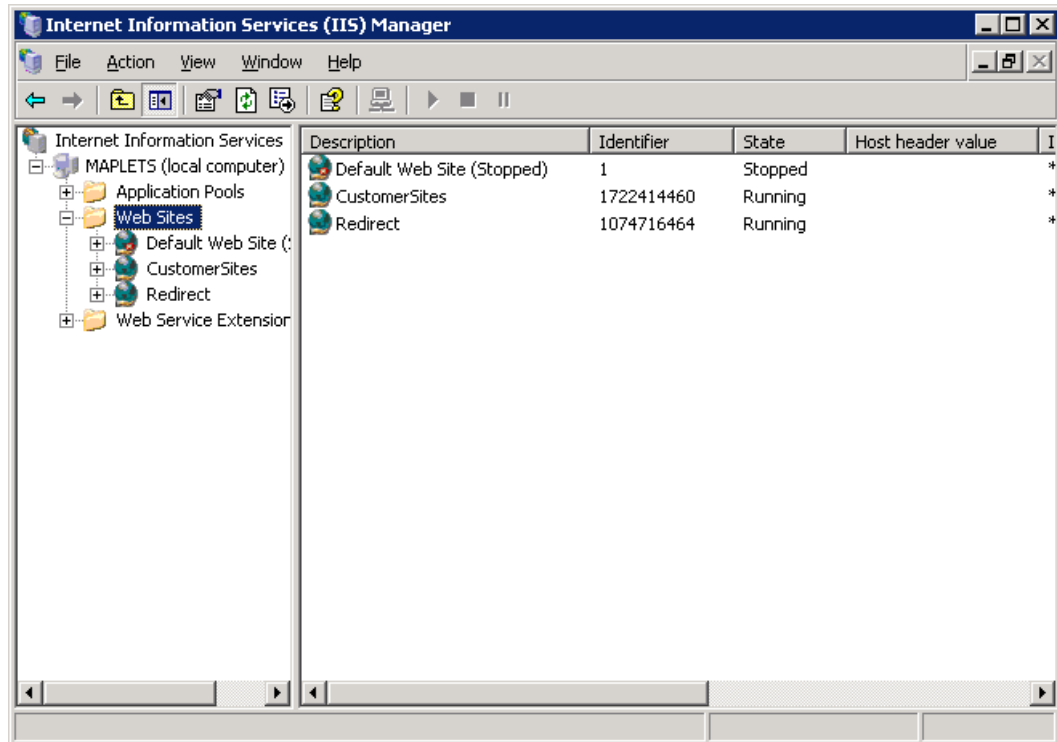


## Redirecting Your Maplewood Website

These instructions are to be used should you need to redirect your website after setting up SSL.

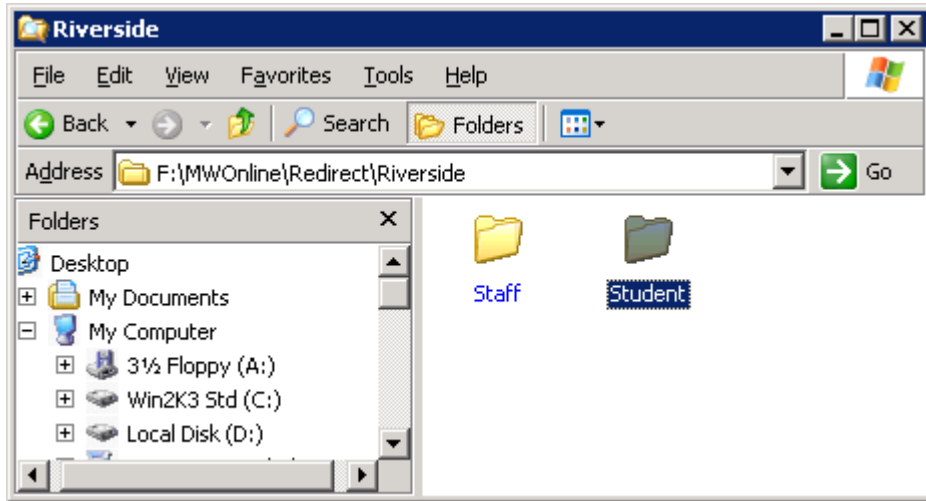
1. Open IIS, and from there create a new site underneath Web Sites by right-clicking on Web Sites, selecting new, and then clicking on Web Site. Name this new web site Redirect.



2. In the wizard, leave the default for the port at 80 for now, and click Next.
3. Open Windows Explorer and create a new folder in the MWOnline folder called Redirect. Now browse to that folder in the wizard.
4. Now you want to create a virtual directory that will mimic your existing site path. So for example your existing path is: <http://servername:8080/schoolname/Staff>. Now create a virtual directory to match this by right-clicking on your Redirect site, selecting New, and then select Virtual Directory.
5. Following the example above here you would want to enter your school name as the alias (Example: Riverside) in the wizard, and then click Next.
6. Open Windows Explorer, and create a new folder underneath the Redirect one in MWOnline. This folder will have the name of your school as well, and once this is created, browse to it in the wizard.
7. In the next step, it will ask what permissions you want to assign to this directory. The default permission of read will be fine.
8. After finishing with the wizard, right-click on the new virtual directory of your school name. Select New, and then select Virtual Directory. The name of this directory will be Staff,

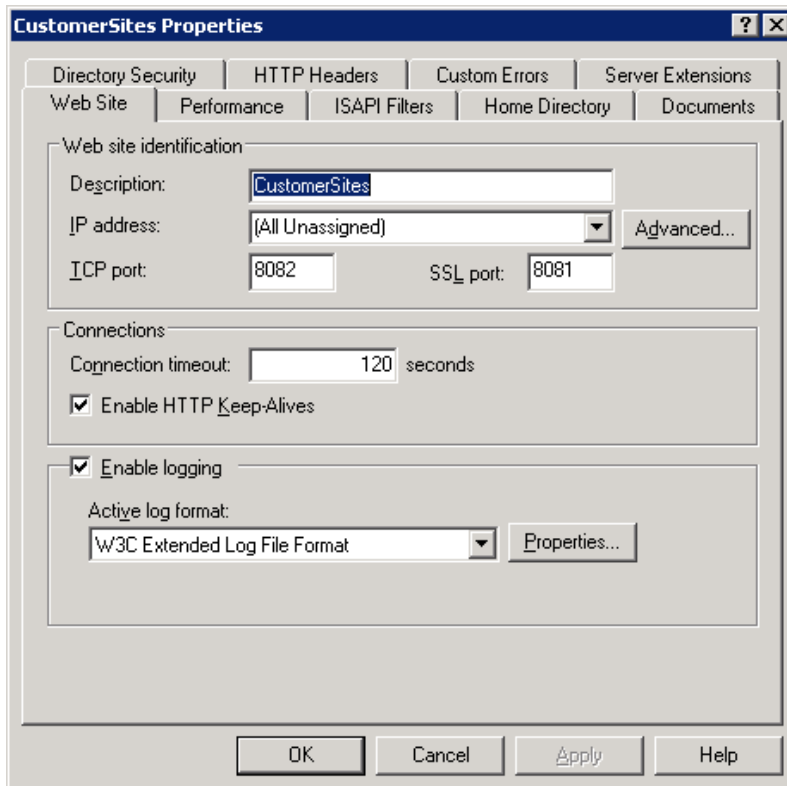
with the same permissions as above. When it asks for the path, open Windows Explorer and create a folder named Staff under your folder that's named after your school. Now browse to it in the wizard and finish creating the directory.

9. Follow the above step to create a Student virtual directory under the school. It should look something like this when completed:

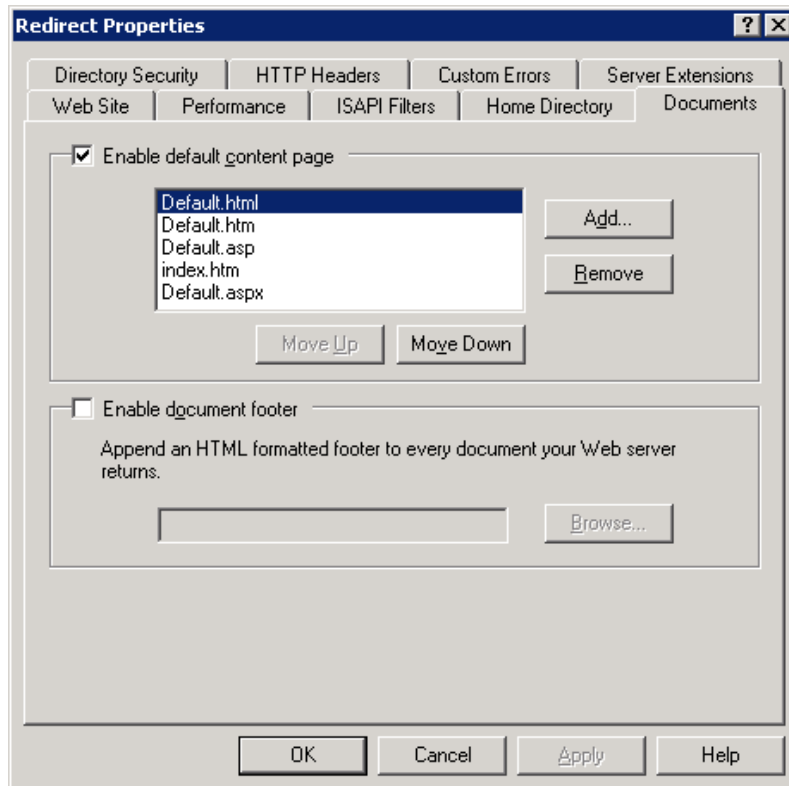


10. Now we'll correct the ports for each website. Right-click on your original school website and select Properties.

11. Change the ports to 8082 for TCP and 8081 for SSL as shown below, and then click OK.



12. Right-click on your Redirect site, select Properties, and change the TCP port to 8080 (to mimic the example site in step 4), and then click Apply.
13. While still in properties, click on the Documents tab. Make sure that Default.html is on the top of the list. If it is not in the list add it, or if it is not at the top, use the Move Up button. Once this is completed, click OK.



14. Using Notepad, create an html file called Default.html. In this file, include the following code (modify this code as it fits your server, and school name):  

```
<html>  
<header><META HTTP-EQUIV="Refresh" CONTENT="0";  
URL=https://servername:8081/schoolname/Staff/default.aspx">  
</header>  
</html>
```
15. Save this file in the Staff folder, under your school folder. Now copy this file into the Student folder and modify the content to say Student instead of Staff in the URL.
16. Now, when using the original links to access your website, they will redirect you to your secure site correctly.