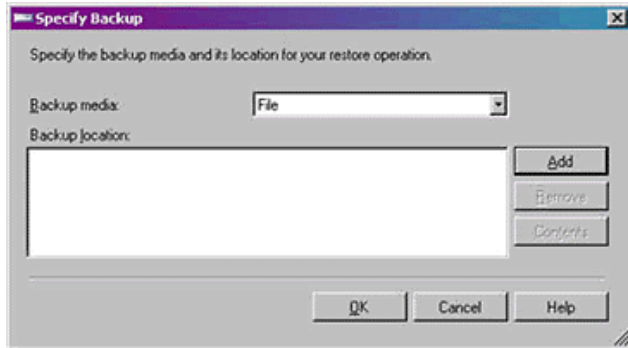
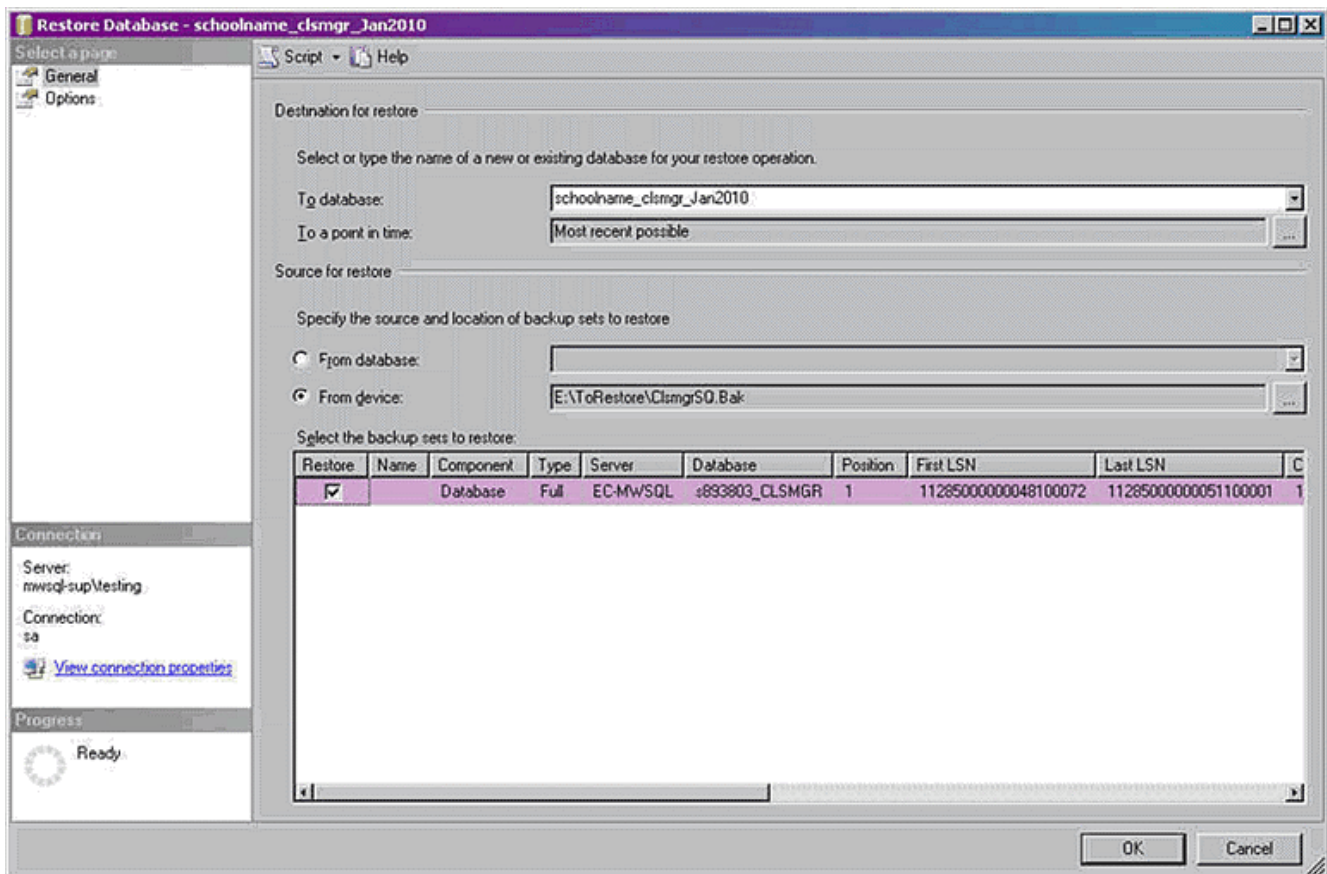


## Restoring SQL Classroom Manager Database from a Maplewood Backup - SQL Server Version 2008

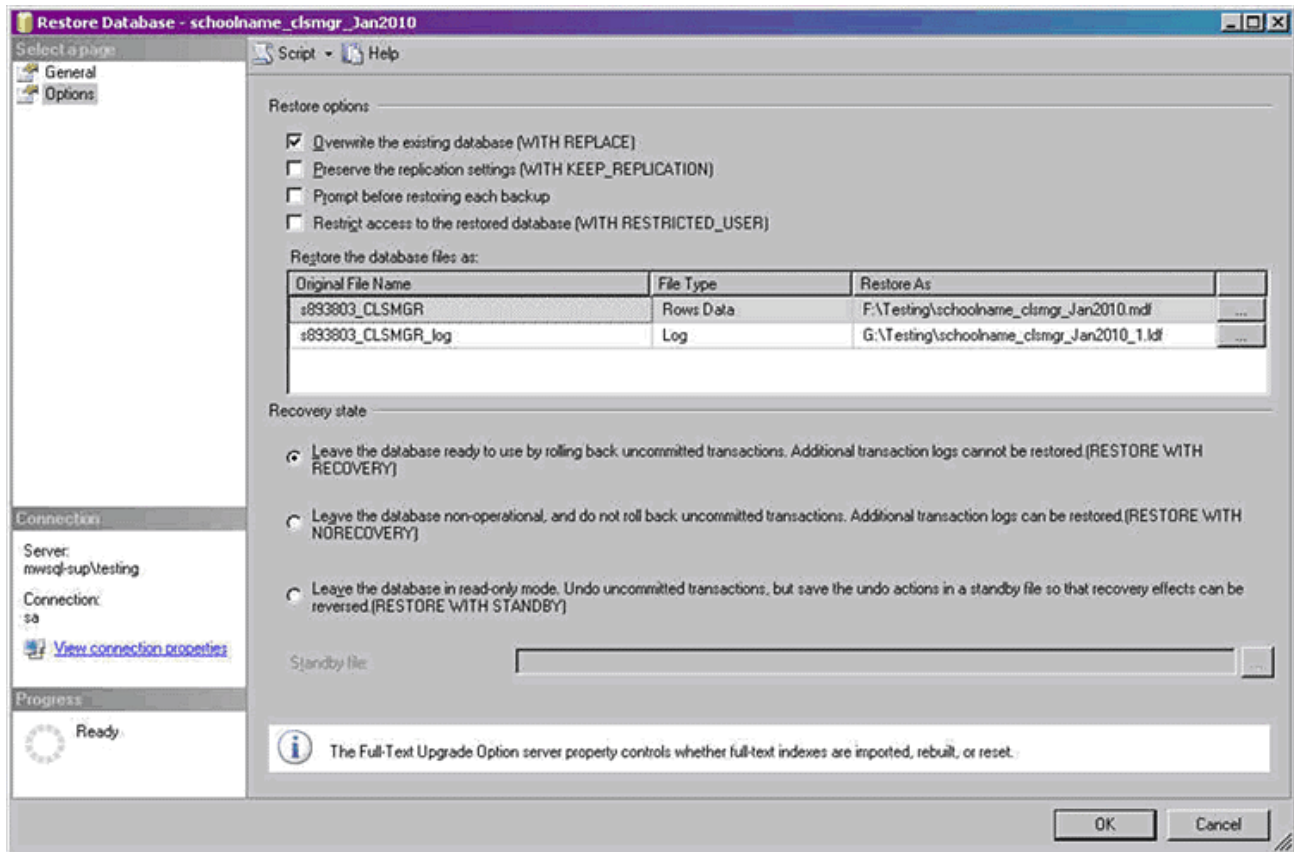
1. Restore the Maplewood backup as usual.
2. In the restored Maplewood data folder, there will be a Clsmgr folder. In this folder is a file called ClsmgrSQ.Bak - this is the Classroom Manager database from the last time a Maplewood backup was run.
3. Copy the file onto a local drive on the SQL server. It has to be a local drive on the SQL server, so that MS SQL Server can find it. UNC paths and mapped drive letters will not be accessible from MS SQL Server.
4. Open Microsoft SQL Server Management Studio and log into the appropriate server.
5. In MS SQL Server, right-click on Databases and select Restore Database
6. Under "Destination for restore", in the "To Database" textbox, type or select the name that you want the database to have.
  - a. If you are purposely restoring over top of an existing Classroom Manager database, select the name of the existing database from the list.
  - b. If you are restoring the data for use in a separate Maplewood dataset, you will need to give the Classroom Manager database a unique name (example, "schoolname\_clsmgr\_Jan2010")
7. Under "Source for restore", select the "From device" radio button then click the "..." button on the far right.
8. Click "Add" then navigate to the where you copied the ClsmgrSQ.Bak file in Step 3.



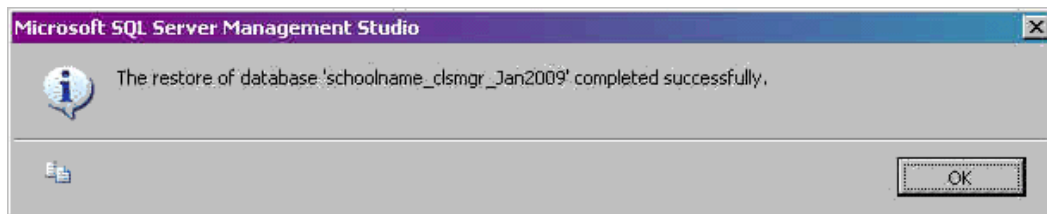
9. Select this file and click OK. Verify that the contents of that file are showing up under "Select the backup sets to restore". In this grid, check the box under Restore.



- Click on Options on the far left. If you are purposely restoring over top of an existing Classroom Manager database, place a checkmark in "Overwrite the existing database". Make sure the "RESTORE WITH RECOVERY" option is selected under Recovery State.



- Click OK. The progress will be indicated in a percent value in the Progress section in the bottom left of the screen. When the restore is complete you will receive a message indicating so. Click OK on this message box.



- Once the data is restored, and you are back at the main SQL Server Management Studio screen, you will need to run a script to ensure that the Maplewood software can access this database. Click on New Query in the top left corner of the screen and paste this text into the blank area on the right:

```

/* This will make sure that none of the objects are owned
by MapleAdmin */
Declare @Owner as varchar(20),
@Object as varchar(100),
@Name as nvarchar(120)
Declare Tmp Cursor Fast_Forward FOR
SELECT TABLE_SCHEMA, TABLE_NAME
FROM INFORMATION_SCHEMA.TABLES
Where Table_Schema = 'MapleAdmin'
UNION ALL
SELECT TABLE_SCHEMA, TABLE_NAME
FROM INFORMATION_SCHEMA.VIEWS
Where Table_Schema = 'MapleAdmin'

```

```

UNION ALL
SELECT ROUTINE_SCHEMA, ROUTINE_NAME
FROM INFORMATION_SCHEMA.ROUTINES
Where ROUTINE_SCHEMA = 'MapleAdmin'
Open Tmp
Fetch Next from Tmp into
@Owner,@Object
While @@Fetch_Status = 0
Begin
set @Name = @Owner + '.' + @Object
exec sp_Changeobjectowner @Name, 'dbo'
Fetch Next from Tmp into
@Owner,@Object
END
Close Tmp
Deallocate Tmp

exec sp_dropuser 'MapleAdmin'
exec sp_changedbowner 'sa'
exec sp_adduser 'MapleAdmin', 'MapleAdmin', 'db_owner'

```

Note: If this SQL server has never been used for a Classroom Manager database before, the MapleAdmin user will not exist. Please contact Maplewood.

13. Select your database name from the drop-down list (the default database is "master", so the dropdown list will currently have that name selected). Click the ! Execute button. The message "Command(s) completed successfully." should display in the Results pane.
14. If you need to change the Classroom Manager database name or server name in your Maplewood Administration System, please do this using the program Destlo32.exe. Click the MW Enterprise button to access these fields.

---

## Additional Reading

If you would like more information on the process of backing up and restoring database for SQL server, please visit the following site.

<http://msdn2.microsoft.com/enus/library/ms190436.aspx>