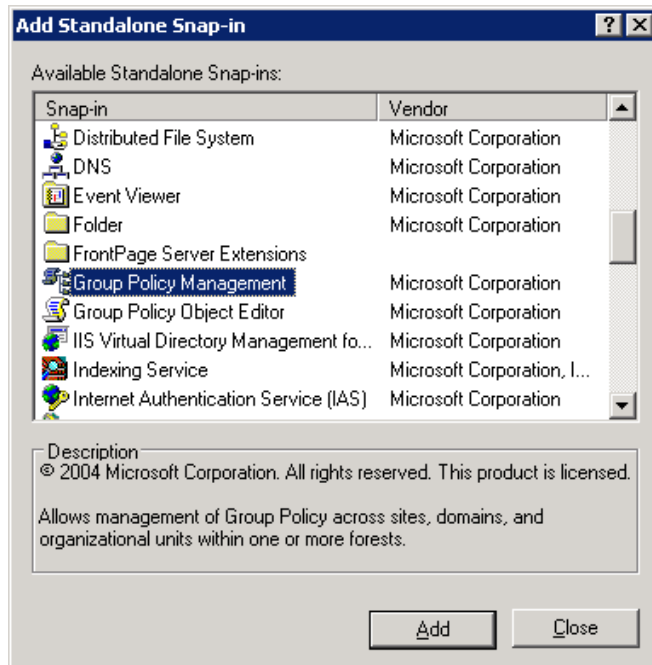
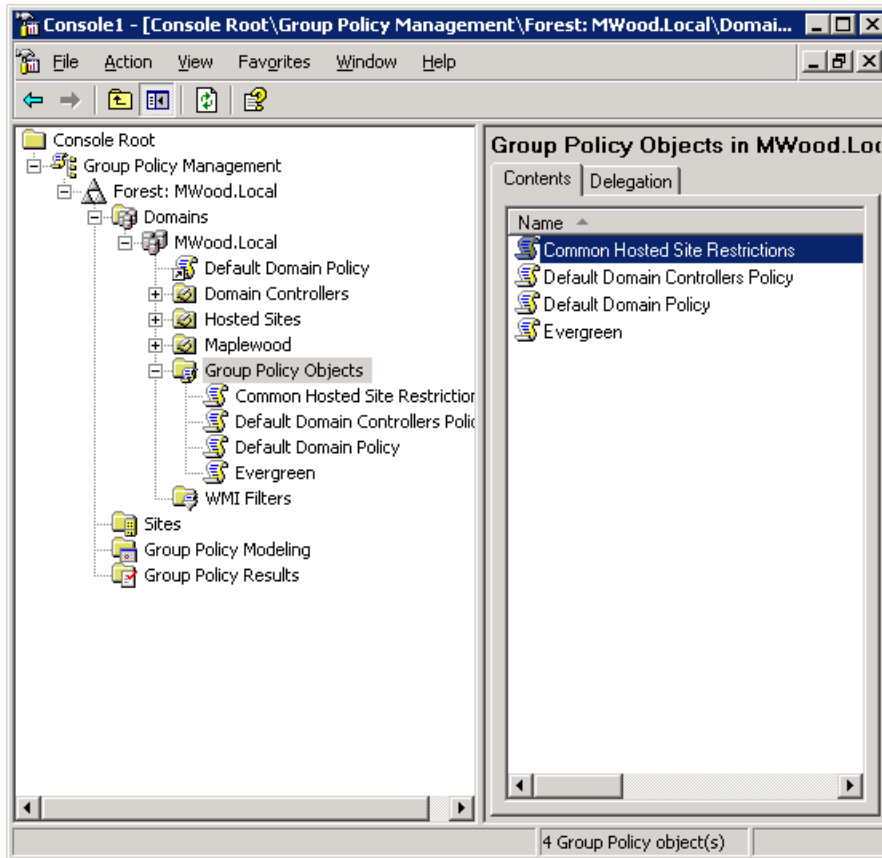


Using Group Policies to Restrict Terminal Services Sessions

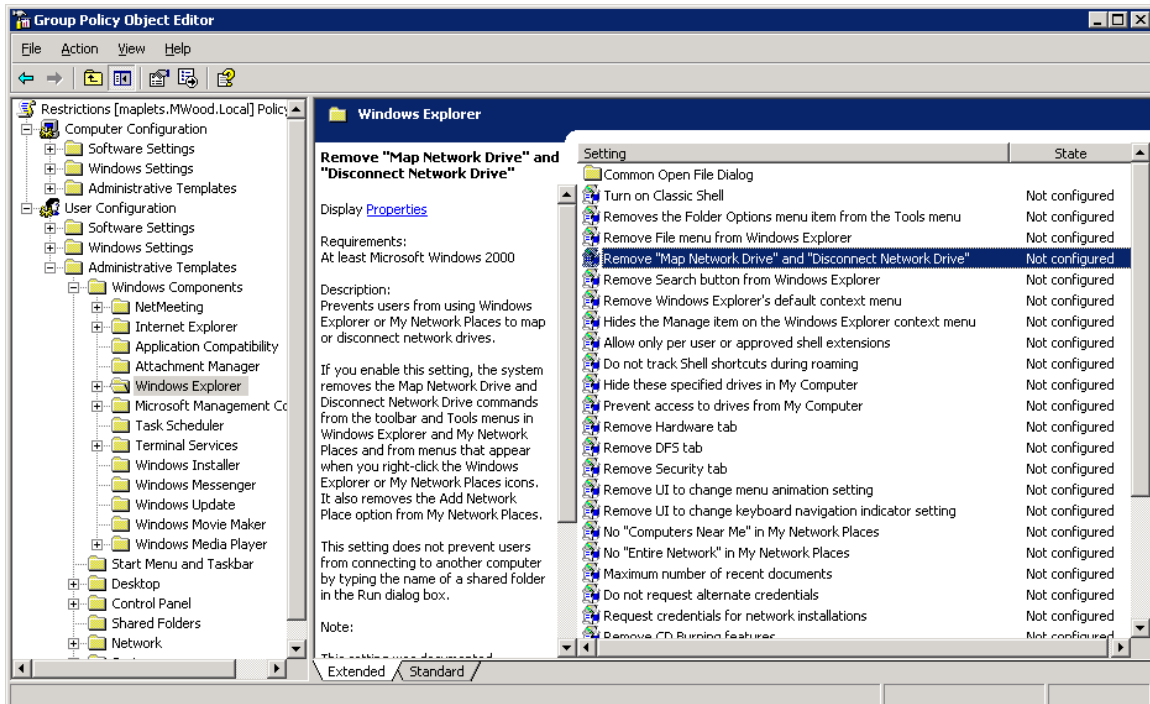
1. From a Windows Server 2003-based computer in the domain, log on as a domain administrator, click on the Start button, and then select Run.
2. In the run line type mmc and in the console, go to File > Add/Remove Snap-in.
3. Under the Standalone tab click Add, and then select Group Policy Management and click Add, and then OK.



4. Create a new Group Policy Object by right-clicking on Group Policy Objects and selecting New.
5. Right-click on your new GPO and select edit.



- From the GPO Editor screen you can now define what access you would like users to have through Terminal Services.



7. As an example, under User Configuration > Administrative Templates > Windows Components > Windows Explorer, you can double click on pre-existing security policies which are currently not configured to enable or disable them to suit your needs.
8. You can now right-click on the Organizational Unit you want to apply the settings to and select Link an existing GPO.

Once you have tailored the Group Policy Object to your liking it should now look something like this.

